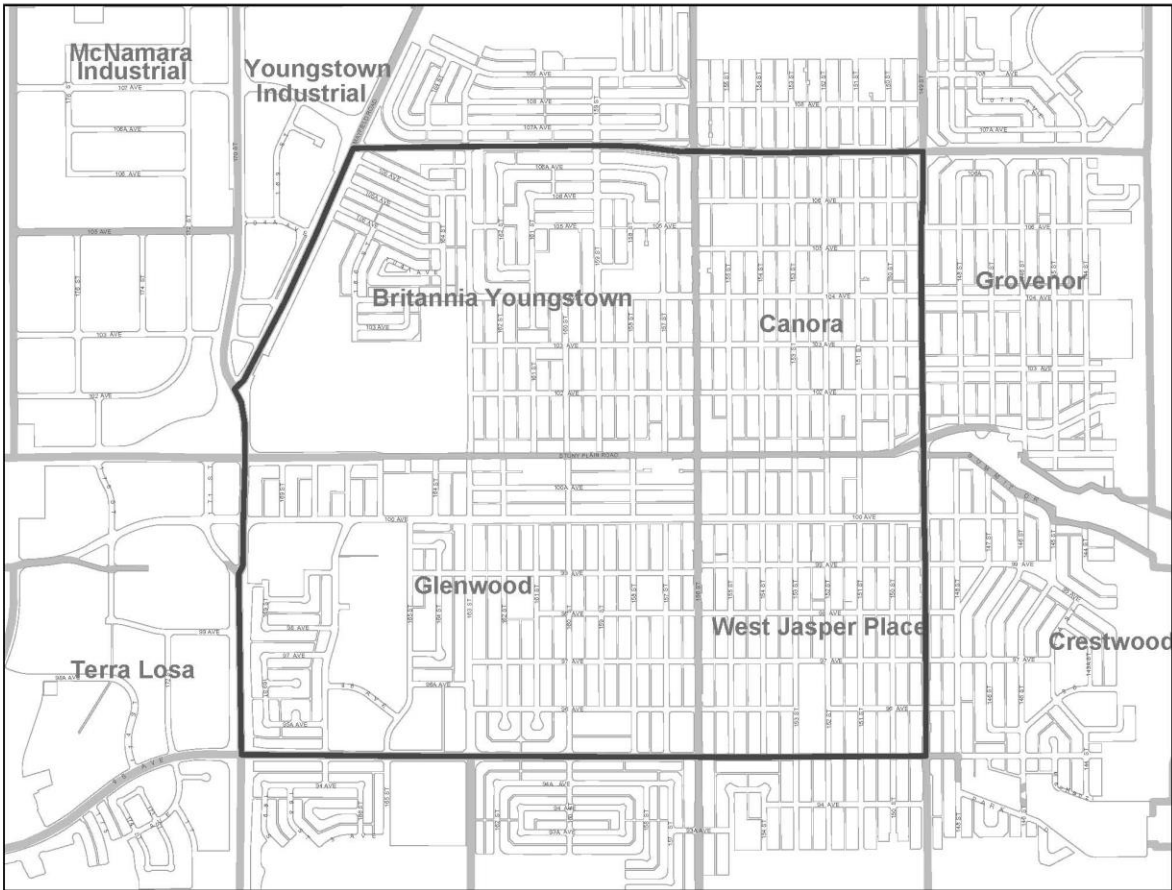


Jasper Place Historic Resources Inventory Batch 4

Presentation to the Edmonton Historical Board
March 28, 2018







SITES RECOMMENDED FOR INCLUSION ON INVENTORY OF HISTORIC RESOURCES

MARCH 13, 2018, HISTORIC RESOURCES REVIEW PANEL MEETING

1. Richards Residence: 10245 – 153 Street NW

Built c. 1932



1. Richards Residence: 10245 – 153 Street NW

Built c. 1932



2. Imperial Building: 15110 Stony Plain Road NW

Built 1956



2. Imperial Building: 15110 Stony Plain Road NW

Built 1956



2. Imperial Building: 15110 Stony Plain Road NW

Built 1956



3. Fuller Residence: 9902 – 152 Street NW

Built c. 1929



3. Fuller Residence: 9902 – 152 Street NW

Built c. 1929



3. Fuller Residence: 9902 – 152 Street NW

Built c. 1929



4. Spurrier Residence: 9805 – 155 Street NW

Built c. 1923



4. Spurrier Residence: 9805 – 155 Street NW

Built c. 1923



5. Grant MacEwan Community College Jasper Place Campus: 10045 – 156 Street NW

Built 1978-81



5. Grant MacEwan Community College Jasper Place Campus: 10045 – 156 Street NW

Built 1978-81



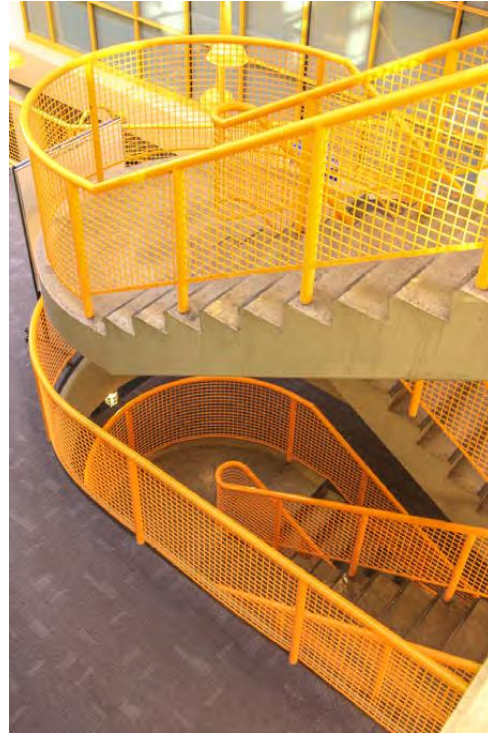
5. Grant MacEwan Community College Jasper Place Campus: 10045 – 156 Street NW

Built 1978-81



5. Grant MacEwan Community College Jasper Place Campus: 10045 – 156 Street NW

Built 1978-81



5. Grant MacEwan Community College Jasper Place Campus: 10045 – 156 Street NW

Built 1978-81



5. Grant MacEwan Community College Jasper Place Campus: 10045 – 156 Street NW

Built 1978-81



6. Hore Residence: 10231 – 157 Street NW

Built c. 1943



7. Jasper Place Separate School District Headquarters: 10421 – 159 Street NW

Built 1956



7. Jasper Place Separate School District Headquarters: 10421 – 159 Street NW

Built 1956



7. Jasper Place Separate School District Headquarters: 10421 – 159 Street NW

Built 1956



8. Brightview School: 15425 – 106 Avenue NW

Built 1967



8. Brightview School: 15425 – 106 Avenue NW

Built 1967



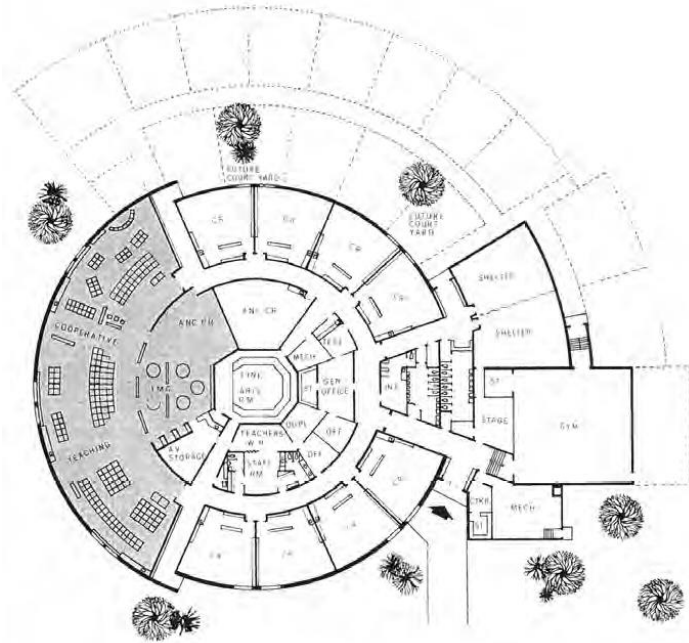
8. Brightview School: 15425 – 106 Avenue NW

Built 1967



8. Brightview School: 15425 – 106 Avenue NW

Built 1967



8. Brightview School: 15425 – 106 Avenue NW

Built 1967



A blue-tinted photograph of a city skyline with various skyscrapers and buildings.

SITES TABLED TO APRIL 10, 2018, HRRP MEETING FOR FURTHER EVALUATION

1. Canora School: 15450 – 105 Avenue NW

Built 1948-49; 1950; 1957-58



1. Canora School: 15450 – 105 Avenue NW

Built 1948-49; 1950; 1957-58



1. Canora School: 15450 – 105 Avenue NW

Built 1948-49; 1950; 1957-58



1. Canora School: 15450 – 105 Avenue NW

Built 1948-49; 1950; 1957-58



2. Apache Seeds: 10136 – 149 Street NW

Built 1964



2. Apache Seeds: 10136 – 149 Street NW

Built 1964



2. Apache Seeds: 10136 – 149 Street NW

Built 1964



3. Jasper Place High School: 16018 – 104 Avenue NW

Built 1956-57; 1960; 1963



3. Jasper Place High School: 16018 – 104 Avenue NW

Built 1956-57; 1960; 1963



3. Jasper Place High School: 16018 – 104 Avenue NW

Built 1956-57; 1960; 1963



3. Jasper Place High School: 16018 – 104 Avenue NW

Built 1956-57; 1960; 1963



4. Fred Broadstock Outdoor Swimming Pool: 15720 – 105 Avenue NW

Built 1960-61; 1967-68



4. Fred Broadstock Outdoor Swimming Pool: 15720 – 105 Avenue NW

Built 1960-61; 1967-68



4. Fred Broadstock Outdoor Swimming Pool: 15720 – 105 Avenue NW

Built 1960-61; 1967-68



4. Fred Broadstock Outdoor Swimming Pool: 15720 – 105 Avenue NW

Built 1960-61; 1967-68



5. Our Lady of Fatima Separate School: 9825 – 158 Street NW

Built 1954; 1963



5. Our Lady of Fatima Separate School: 9825 – 158 Street NW

Built 1954; 1963



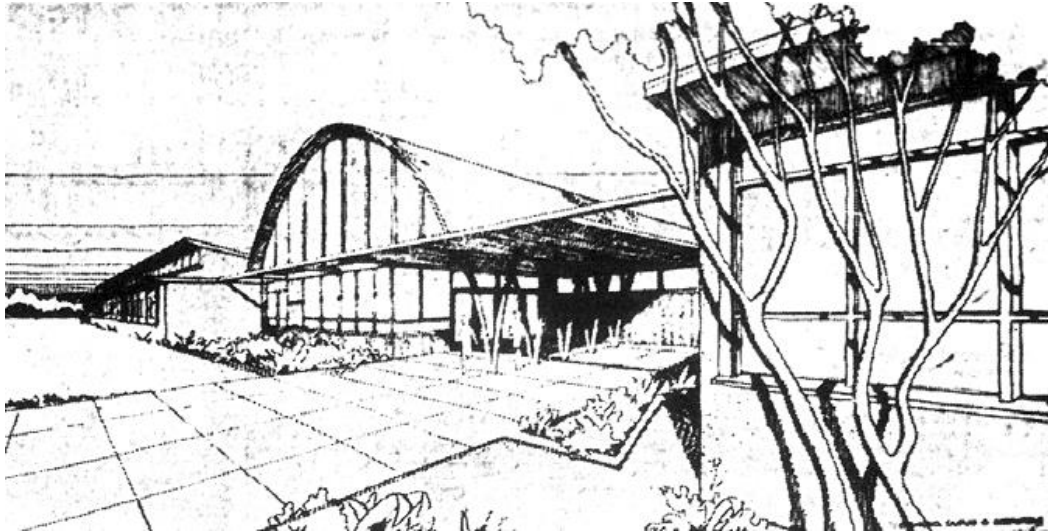
5. Our Lady of Fatima Separate School: 9825 – 158 Street NW

Built 1954; 1963



5. Our Lady of Fatima Separate School: 9825 – 158 Street NW

Built 1954; 1963



6. Bevington Residence: 9705 – 162 Street NW

Built c. 1948



6. Bevington Residence: 9705 – 162 Street NW

Built c. 1948



6. Bevington Residence: 9705 – 162 Street NW

Built c. 1948



7. Alberta Government Telephones Jasper Place Exchange: 15751 Stony Plain Road NW

Built 1952-53; c. 1961; 1965



7. Alberta Government Telephones Jasper Place Exchange: 15751 Stony Plain Road NW

Built 1952-53; c. 1961; 1965



7. Alberta Government Telephones Jasper Place Exchange: 15751 Stony Plain Road NW

Built 1952-53; c. 1961; 1965



7. Alberta Government Telephones Jasper Place Exchange: 15751 Stony Plain Road NW

Built 1952-53; c. 1961; 1965



7. Alberta Government Telephones Jasper Place Exchange: 15751 Stony Plain Road NW

Built 1952-53; c. 1961; 1965



A blue-tinted photograph of the Edmonton skyline, featuring several prominent skyscrapers and modern buildings.

Thank you.